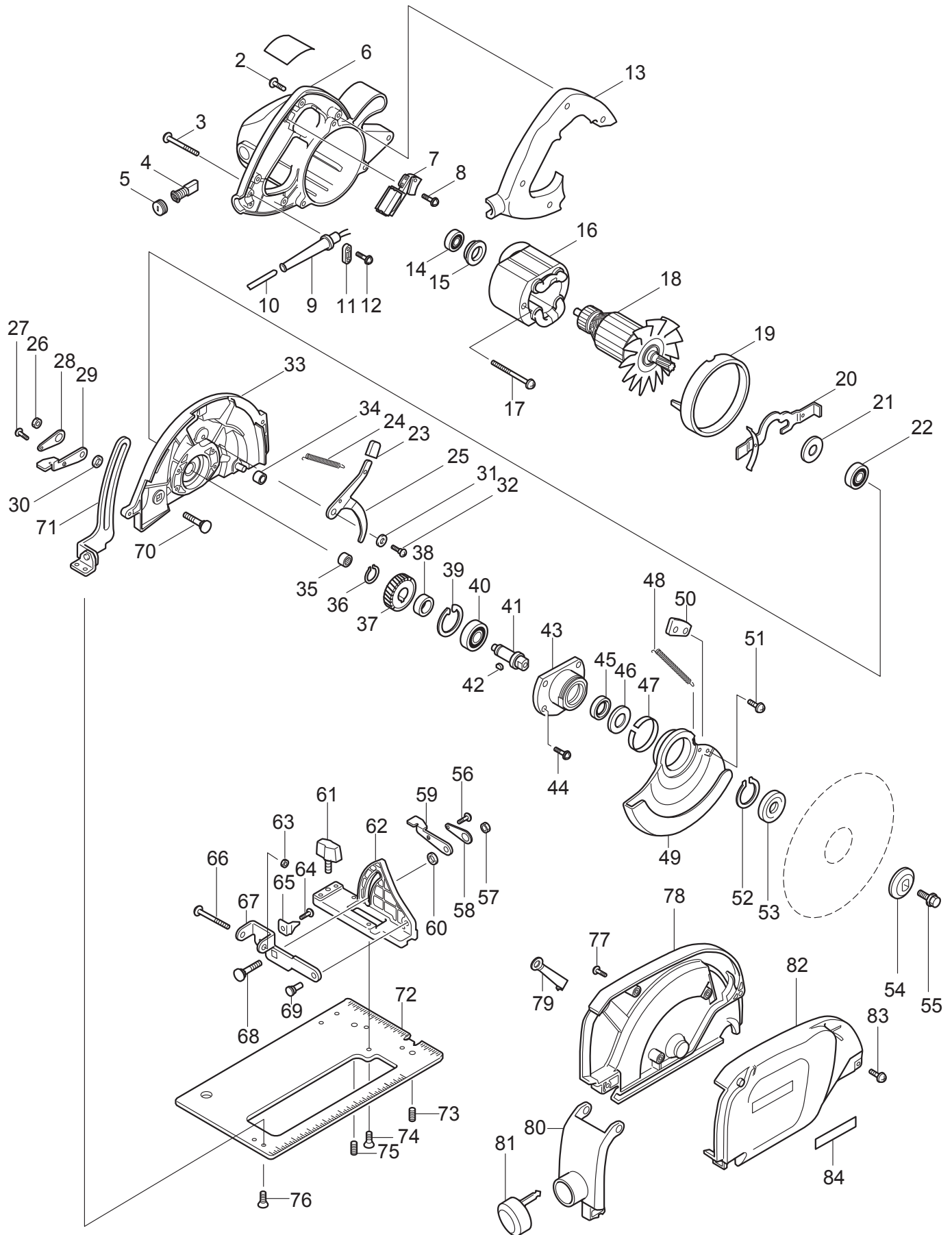




05 - 2010

5057KB

# 7-1/4" DUSTLESS CIRCULAR SAW



Item No.	Type	Sub	Part No.	Description (*see Service Changes on the bottom)	Qty	Unit
2			911148-2	PAN HEAD SCREW M4X25	4	PC.
3			911273-9	PAN HEAD SCREW M5X50	3	PC.
4		1	181047-4	CARBON BRUSH CB-154 2PC/SET (W/O ORIGIN)	1	SET
		2	194986-9	CARBON BRUSH CB-154 2PC/SET (W/ ORIGIN)	1	SET
5			643650-4	BRUSH HOLDER CAP 6.5-13.5	2	PC.
6		1	151554-1	* MOTOR HOUSING COMPLETE	1	PC.
		INC.	643660-1	* BRUSH HOLDER 6.5-13.5	2	PC.
		2	153920-8	* MOTOR HOUSING COMPLETE	1	PC.
		INC.	643660-1	* BRUSH HOLDER 6.5-13.5	2	PC.
7			651172-0	SWITCH TG933TN-1 (Comply with RoHS regulations)	1	PC.
8			266020-6	TAPPING SCREW 4X12	1	PC.
9			682505-8	CORD GUARD 10-90	1	PC.
10			664276-9	CORD W/PLUG 2P-16-5.0M,SJ	1	PC.
11		1	687001-1	* STRAIN RELIEF	1	PC.
		2	687063-9	* CORD CLAMP	1	PC.
12			265995-6	TAPPING SCREW 4X18	2	PC.
13		1	411523-7B	HANDLE COVER	1	PC.
		2	410201-6	HANDLE COVER	1	PC.
14			210005-4	BALL BEARING 608DDW	1	PC.
15			681625-5	INSULATION WASHER	1	PC.
16		1	636066-0	FIELD ASS'Y 115V	1	PC.
		INC.	654020-2	RING TERMINAL	2	PC.
		INC.	654502-4	CONNECTOR P-2 (TYPE2)	2	PC.
17			266046-8	TAPPING SCREW 5X50	2	PC.
18		1	616606-0	ARMATURE ASS'Y 115V	1	PC.
		INC.	241513-4	FAN 92	1	PC.
		INC.		Item No. 14,15,21,22		
		2	516606-9	ARMATURE ASS'Y 115V	1	PC.
		INC.	241513-4	FAN 92	1	PC.
		INC.		Item No. 14,15,21,22		
19			415603-1	FAN GUIDE	1	PC.
20			163113-9	SPINDLE LOCK	1	PC.
21			213102-5	DUST SEAL 12	1	PC.
22			211129-9	BALL BEARING 6201DDW	1	PC.
23			421676-4	RUBBER CAP	1	PC.
24			231823-7	TENSION SPRING 4	1	PC.
25			344759-2	OPEN LEVER	1	PC.
26			931402-8	HEX. NUT M8	1	PC.
27			911106-8	PAN HEAD SCREW M4X8	1	PC.
28			341415-5	LOCK PLATE	1	PC.
29			341416-3	LEVER PLATE	1	PC.
30			253766-3	FLAT WASHER 8	1	PC.
31			941201-0	FLAT WASHER 8	1	PC.
32			251267-5	SCREW	1	PC.
33		3	153302-4	* GEAR HOUSING COMPLETE	1	PC.
		INC.	213459-4	* O RING 32	1	PC.
		INC.		* Item No. 35		
34			262523-8	RUBBER SLEEVE 6	1	PC.
35			212052-1	NEEDLE BEARING 1010	1	PC.
36			961055-9	* RETAINING RING S-15	1	PC.
37			226532-1	* HELICAL GEAR 39 (OLD# 221647-9 - N/L/A)	1	PC.
38			257064-7	RING 15	1	PC.
39			962153-2	RETAINING RING R-35	1	PC.
40			211228-7	BALL BEARING 6202DDW	1	PC.
41			324257-2	* SPINDLE	1	PC.
42			254032-1	* WOODRUFF KEY 5	1	PC.
43			317187-4	BEARING BOX	1	PC.

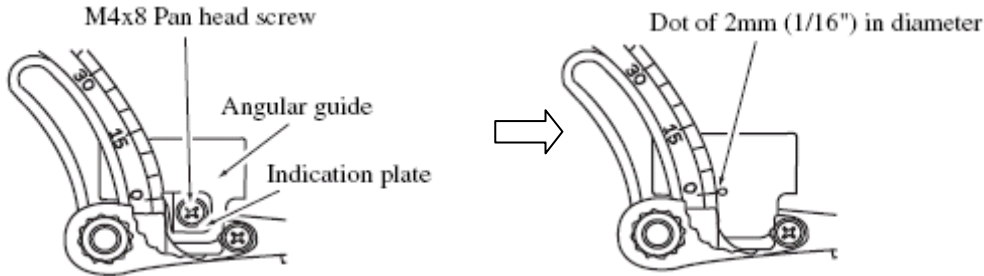
Item No.	Type	Sub	Part No.	Description (*see Service Changes on the bottom)	Qty	Unit
44			911126-2	PAN HEAD SCREW M4X16	4	PC.
45			213319-0	OIL SEAL 20	1	PC.
46			344758-4	LABYRINTH RING	1	PC.
47			344808-5	THICKNESS RING	1	PC.
48		1	231806-7	* TENSION SPRING 4	1	PC.
		2	231828-7	* TENSION SPRING 4	1	PC.
49		1	317159-9	* SAFETY COVER	1	PC.
		2	318351-0	* SAFETY COVER	1	PC.
50			344760-7	SUB PLATE	1	PC.
51			911111-5	PAN HEAD SCREW M4X10	2	PC.
52			961201-4	RETAINING RING S-42	1	PC.
53			224151-7	INNER FLANGE 40	1	PC.
54			224275-9	OUTER FLANGE 40	1	PC.
55			251644-1	HEX. FLANGE HEAD BOLT M8X20	1	PC.
56			911106-8	PAN HEAD SCREW M4X8	1	PC.
57			931402-8	HEX. NUT M8	1	PC.
58			341415-5	LOCK PLATE	1	PC.
59			341416-3	LEVER PLATE	1	PC.
60			253766-3	FLAT WASHER 8	1	PC.
61			251858-2	SCREW M6X15	1	PC.
62			317160-4	ANGULAR PLATE	1	PC.
63			252103-8	HEX. LOCK NUT M5-8	1	PC.
64			911108-4	* PAN HEAD SCREW M4X8 (OLD)	1	PC.
65			344762-3	* INDICATION PLATE (OLD) - N/L/A	1	PC.
66			265075-8	+ P.H. SCREW M5	1	PC.
67			345491-1	* ANGULAR GUIDE (OLD# 344763-1 - N/L/A)	1	PC.
68			266227-4	CAP SQUARE NECK BOLT M8X28	1	PC.
69			256442-8	SHOULDER PIN 6-7	1	PC.
70			265965-5	CAP SQUARE NECK BOLT M8X24	1	PC.
71			163409-8	DEPTH GUIDE	1	PC.
72			317186-6	BASE	1	PC.
73		1	266180-4	+ SCREW M5X12	1	PC.
		2	266213-5	H.S.SET SCREW(FLAT POINT)M5X12	1	PC.
74			912212-2	COUNTERSUNK HEAD SCREW M5X12	5	PC.
75		1	266180-4	+ SCREW M5X12	1	PC.
		2	266213-5	H.S.SET SCREW(FLAT POINT)M5X12	1	PC.
76		1	912107-9	* COUNTERSUNK HEAD SCREW M4X8	2	PC.
		2	265085-5	* COUNTERSUNK HEAD SCREW M4X8	2	PC.
77			265995-6	TAPPING SCREW 4X18	3	PC.
78			158925-3	* DUST BOX L COMPLETE	1	PC.
79			344761-5	EARTH PLATE	1	PC.
80			151564-8	DUST CAP COMPLETE	1	PC.
81			421362-7	CAP	1	PC.
82			188823-7	* DUST BOX R SET	1	PC.
		INC.		* Item No. 84		
83			911263-2	* PAN HEAD SCREW M5X40	2	PC.
84			819003-1	MAKITA LABEL	1	PC.
85			213621-1	* O RING 46 (Added)	1	PC.
100			654001-6	TERMINAL R1.25-3.5	2	PC.
101			652021-4	SCREW #5-40 UNCX 5	1	PC.
102			654001-6	TERMINAL R1.25-3.5	2	PC.
<b>ACCESSORIES</b>				<b>- See catalogue or visit <a href="http://www.makita.ca">www.makita.ca</a> for other optional accessories -</b>		
A01			164095-8	GUIDE RULE	1	PC.
A02			782016-4	OFFSET WRENCH 13	1	PC.
A03			A-90451	7-1/4" C.T.SAW BLADE 28T	1	PC.

## SERVICE CHANGES

### 1. Changes on Motor Housing and Strain Relief

Item No.	Description	Type 1	Type 2
6	Motor Housing Com	151554-1	153920-8
11	Strain Relief	687001-1	687063-9
65	Indication Plage	344762-3	-----
67	Angular Guide	344763-1	345491-1
64	P.H. Screw M4x8	911108-4	----

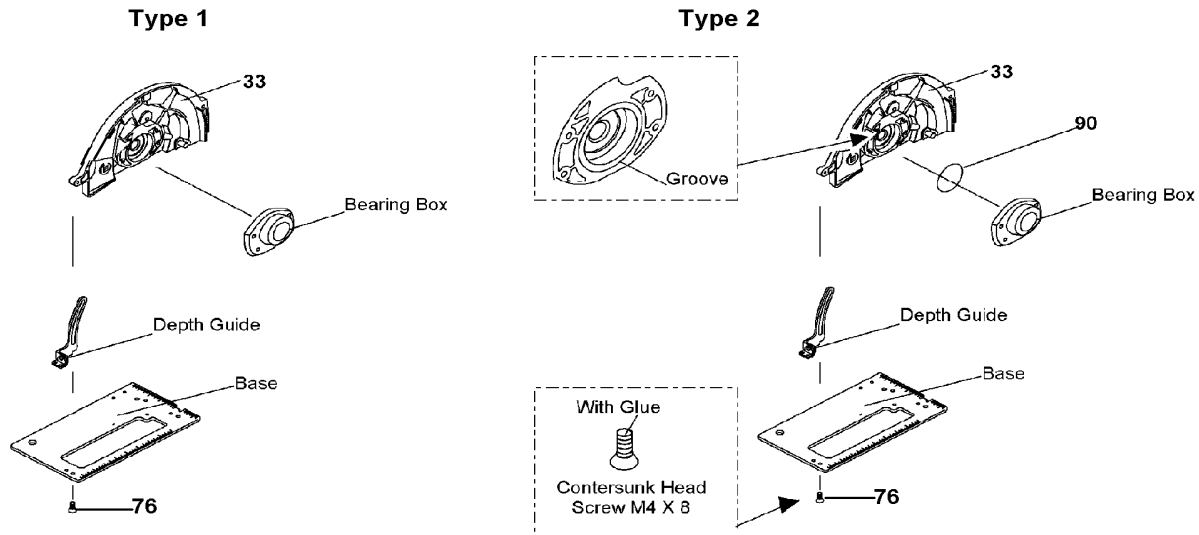
Above parts are completely interchangeable as a set.



### 2. Modification of Gear Housing Complete and Addition of O Ring 46

Item No.	Description	Type 1	Type 2	Type 3
33	Gear Housing Com.	151873-5	152926-3	153302-4
76	Screw	912107-9		265085-5
85	O Ring 46	-----		213621-1

Above parts are completely interchangeable as a set.

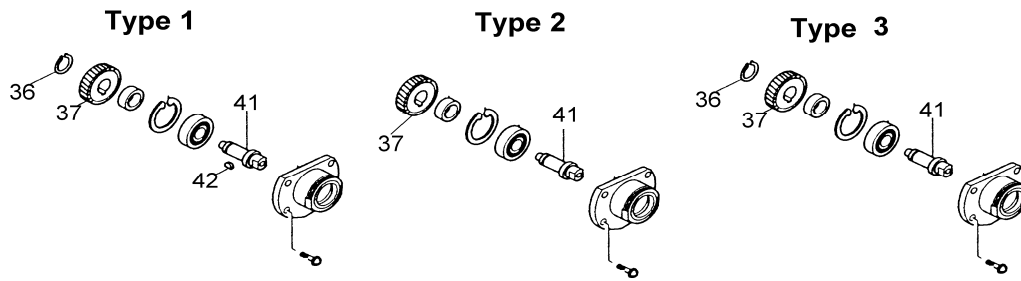


### 3. Change on Spindle, Helical Gear

Item No.	Description	Type 1	Type 2	Type 3
36	Retaining Ring	961055-9	-----	961055-9
37	Helical Gear	221647-9 (N/L/A)		226532-1
41	Spindle	323897-3	324133-0 (N/L/A)	324257-2
42	Woodruff Key 5	254032-1		-----

Above parts are completely interchangeable as a set.

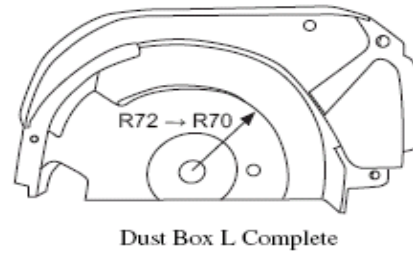
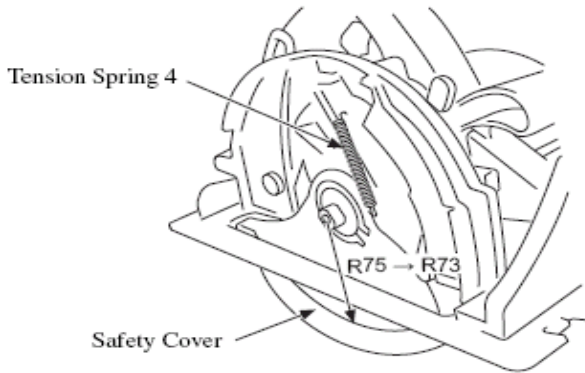
(See illustration on next page.)



**4. Change on Safety Cover, Dust Box L Complete and Tension Spring 4**

Item No.	Description	Type 1	Type 2	Type 3
49	Safety Cover	317159-9		318351-0
78	Dust Box L Com.	151565-6		158925-3
48	Tension Spring 4	231806-7		231828-7
82	Dust Box R Set		183105-2	188823-7
83	P.H.Screw M5x40		911263-2	-----

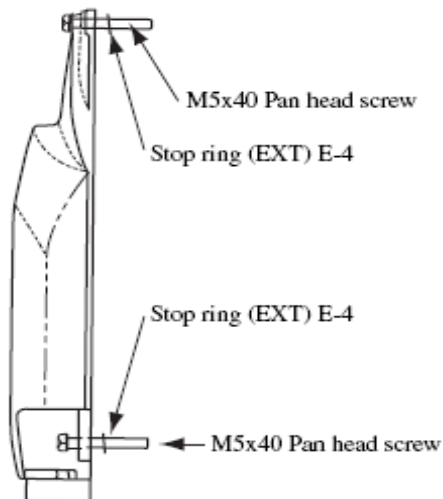
Above parts are completely interchangeable as a set.



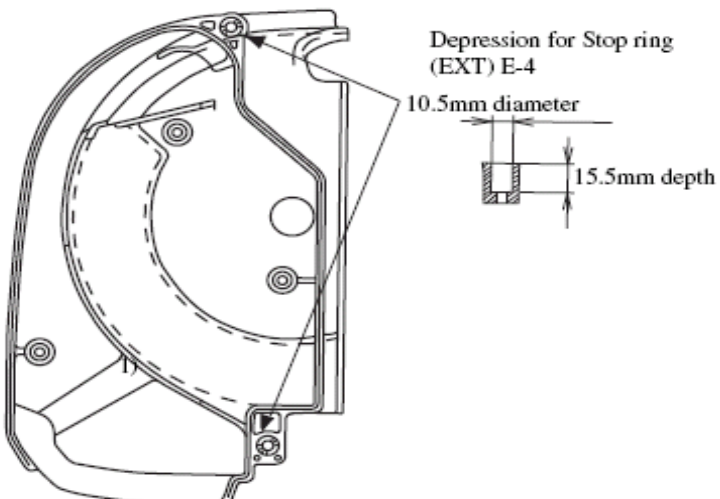
**TYPE2 --> TYPE3**

When assembling new Dust box R set to current Dust box L complete, remove two Stop rings (EXT) E-4 from two M5x40 Pan head screws.

**1) New Dust box R set**



**2) New Dust box L complete**



To comply with the revision of standards:

1) Stop ring (EXT) E-4 (2pcs.) have come into use as the stopper of M5x40 P.H.Screw (2pcs) for Dust box R set. New Dust box R set includes M5x40 Pan head screws and Stop rings (EXT) E-4.

When new Dust box R set is removed for replacement of Saw blade, the M5x40 P.H.Scrws are attached to the Dust box R set.

2) Upper portions over the threaded holes of Dust box L complete have been modified to pass Stop ring (EXT) E-4